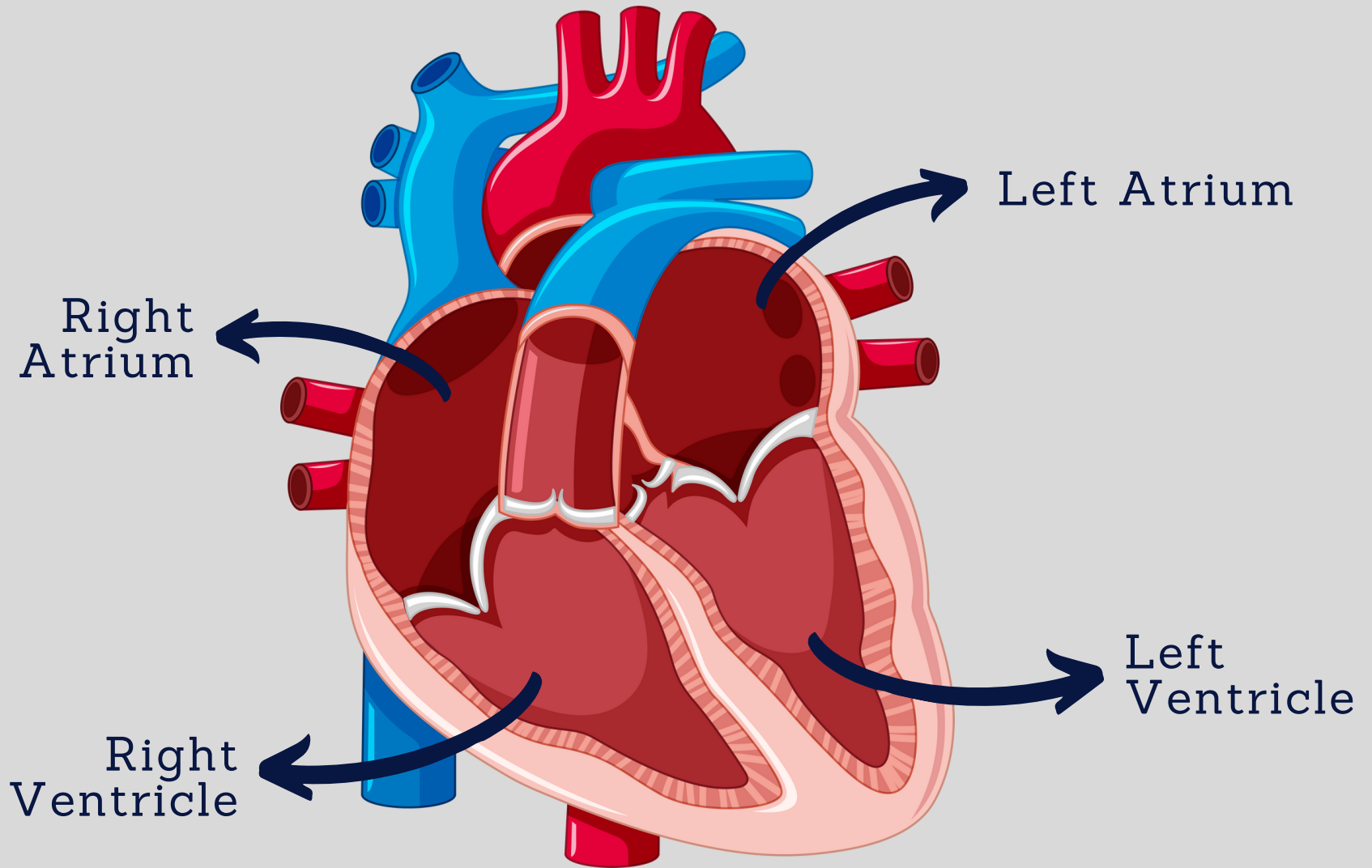


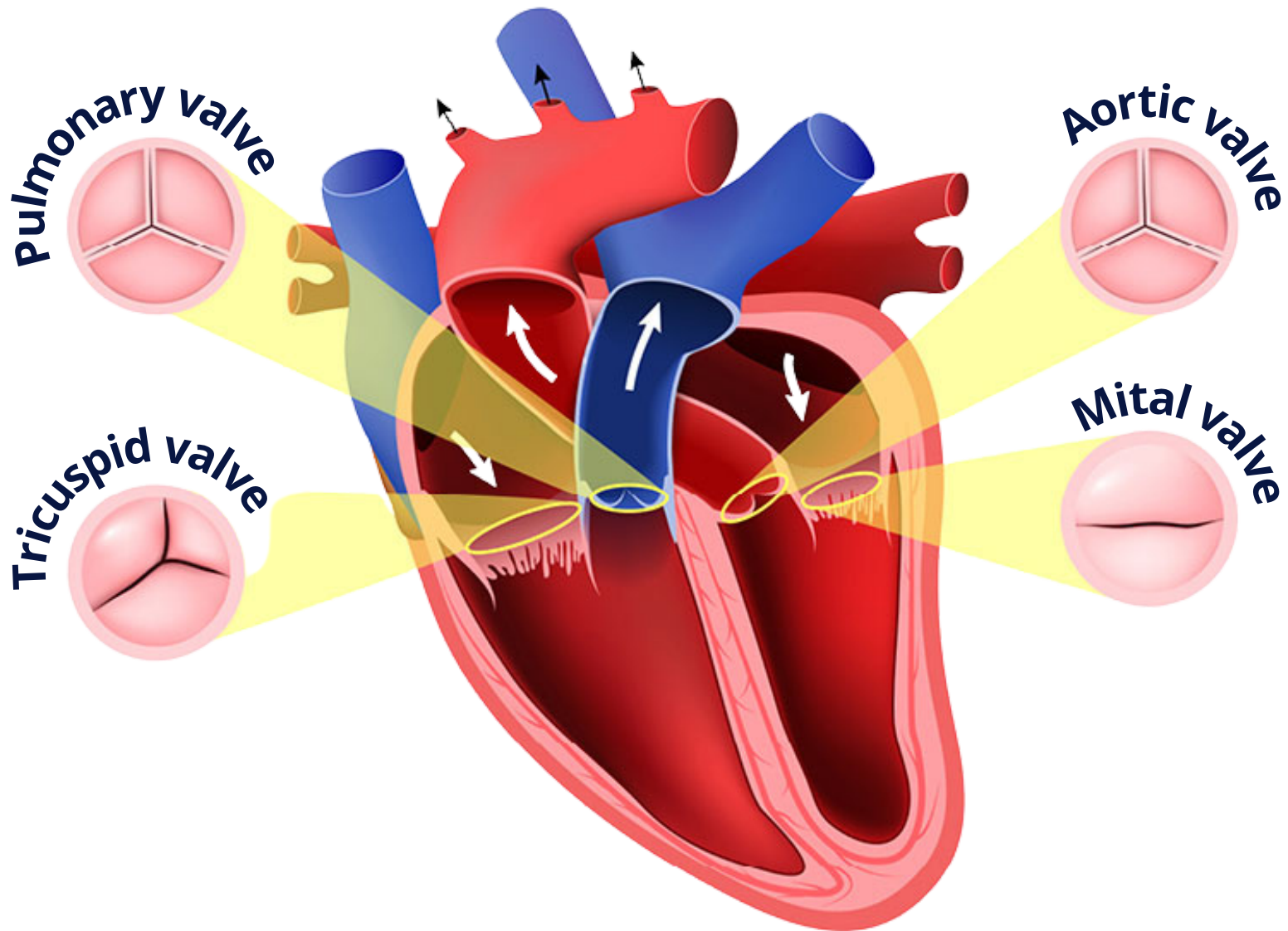
Heart Basics

HEART ANATOMY & FUNCTION



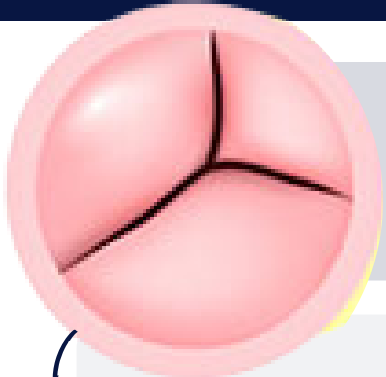


VALVES OF THE HEART





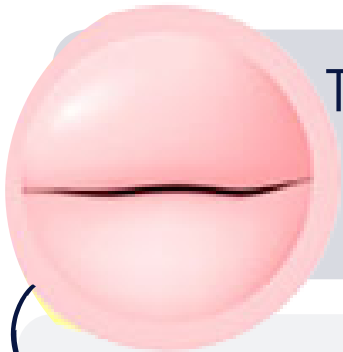
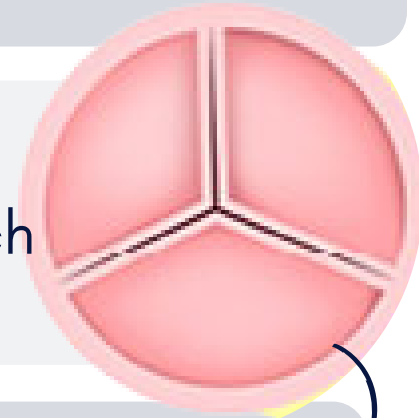
VALVES OF THE HEART



The **TRICUSPID VALVE** regulates blood flow between the upper right atrium and the lower right ventricle.



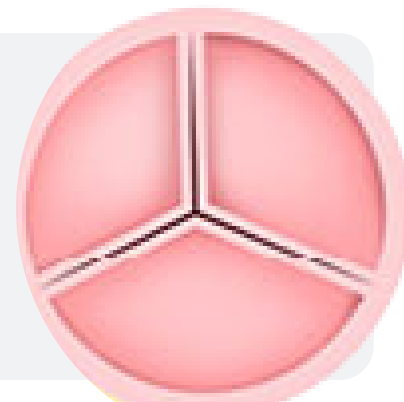
The **PULMONARY VALVE** controls blood flow from the right ventricle into the pulmonary arteries, which take blood to the lungs to pick up oxygen.



The **MITRAL VALVE** allows oxygenated blood from the lungs to move through the left atrium into the left ventricle.



The **AORTIC VALVE** then allows the oxygenated blood in the left ventricle to flow into the AORTA (largest artery in your body) which fuels your body with oxygenated blood.

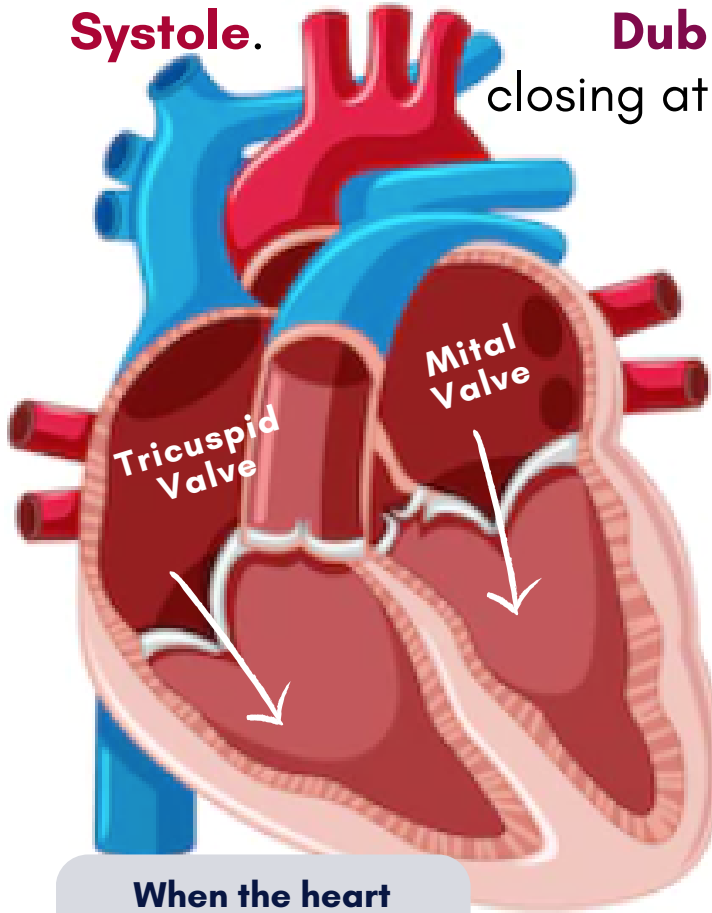




VALVES OF THE HEART

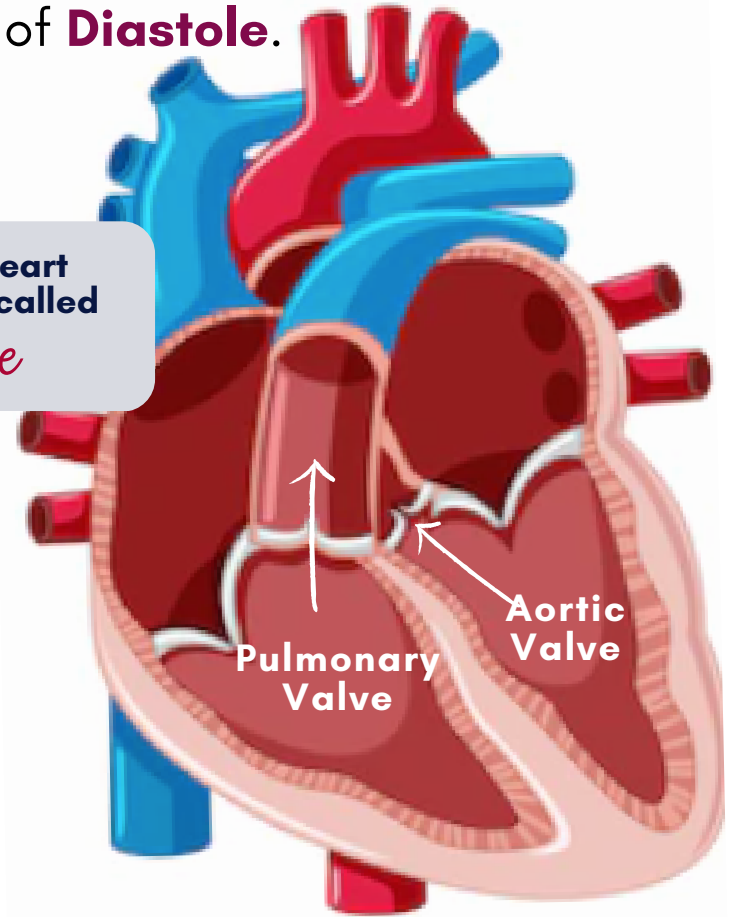
The Heart makes a sound: **LUB DUB**

Lub is the sound of the mitral & tricuspid valves close at the beginning of **Systole**.
Dub is the sound of the aortic & pulmonary valves closing at the beginning of **Diastole**.



When the heart **CONTRACTS** its called *systole*

When the heart **EXPANDS** its called *diastole*





THE DIFFERENT DEGREES OF HEART MURMURS

Grade 1	Very faint. May only be heard by an expert or in certain positions.
Grade 2	An audible but soft murmur, heard in all positions.
Grade 3	Easily heard prominent murmur.
Grade 4	A loud murmur associated with a thrill or felt vibration on the skin. <i>This is the highest grading for diastolic murmurs (murmurs that occur during diastole - when the heart muscles are relaxed).</i>
Grade 5	A loud murmur heard even when a stethoscope is pressed lightly on the chest, plus a thrill.
Grade 6	A very loud murmur that can be heard 5-10mm from the chest, with a thrill.

